



**EARTH &
ENVIRONMENTAL
SCIENCES**



Wildfire modeling with E3SM and machine learning techniques

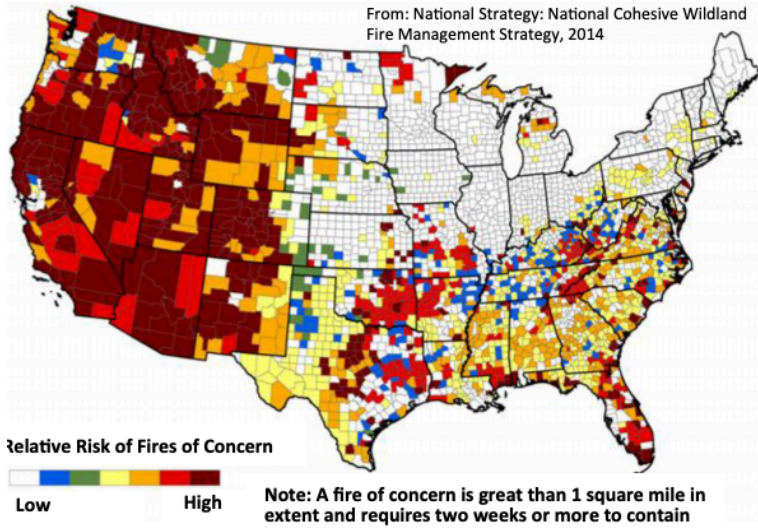
Qing Zhu, William J. Riley, Fa Li

Lawrence Berkeley National Lab, Climate Sciences Department, Climate & Ecosystem Sciences Division

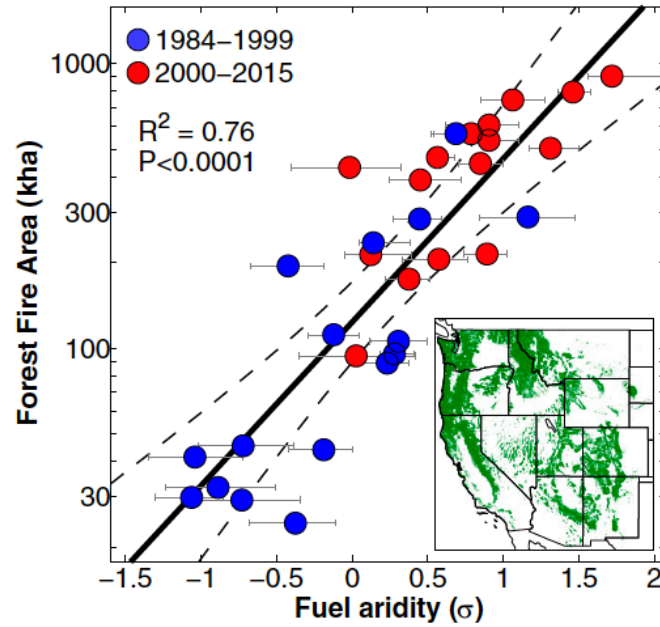
Li Xu, James T. Randerson

University of California Irvine, Earth System Science, Irvine, CA, United States

From: National Strategy: National Cohesive Wildland Fire Management Strategy, 2014

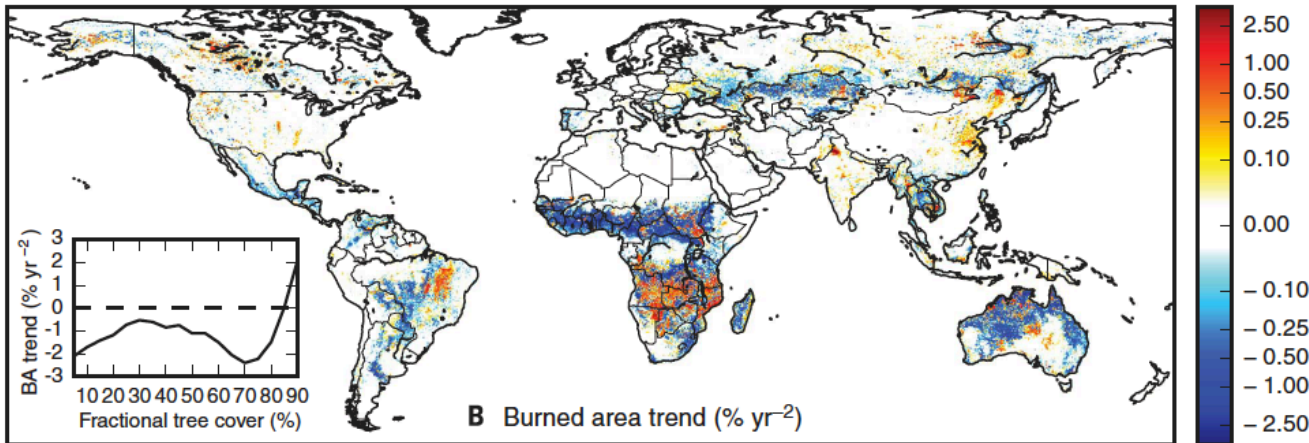


NOAA



Drier climate
Higher fire risk

Abatzoglou 2016

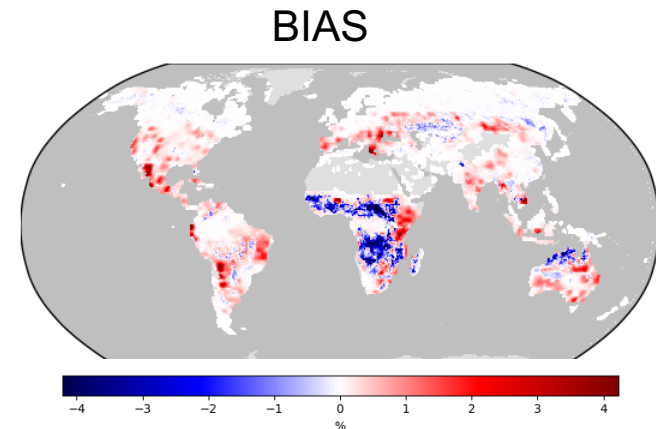
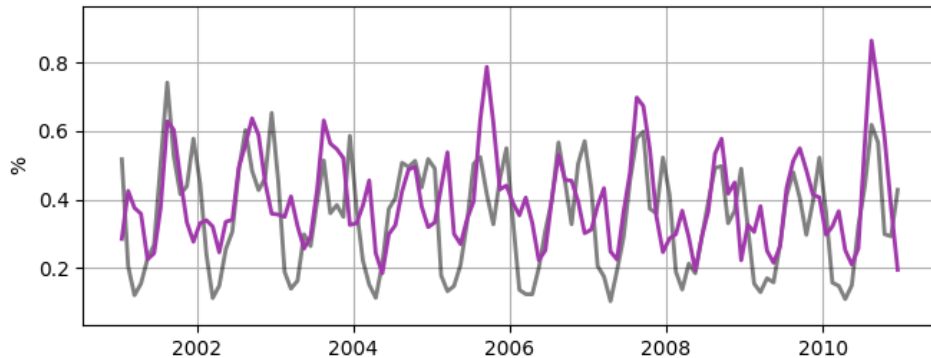


Denser population
Lower burn area

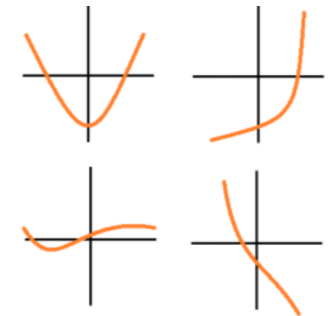
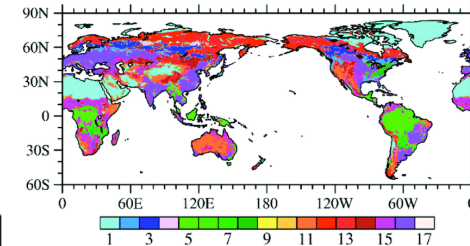
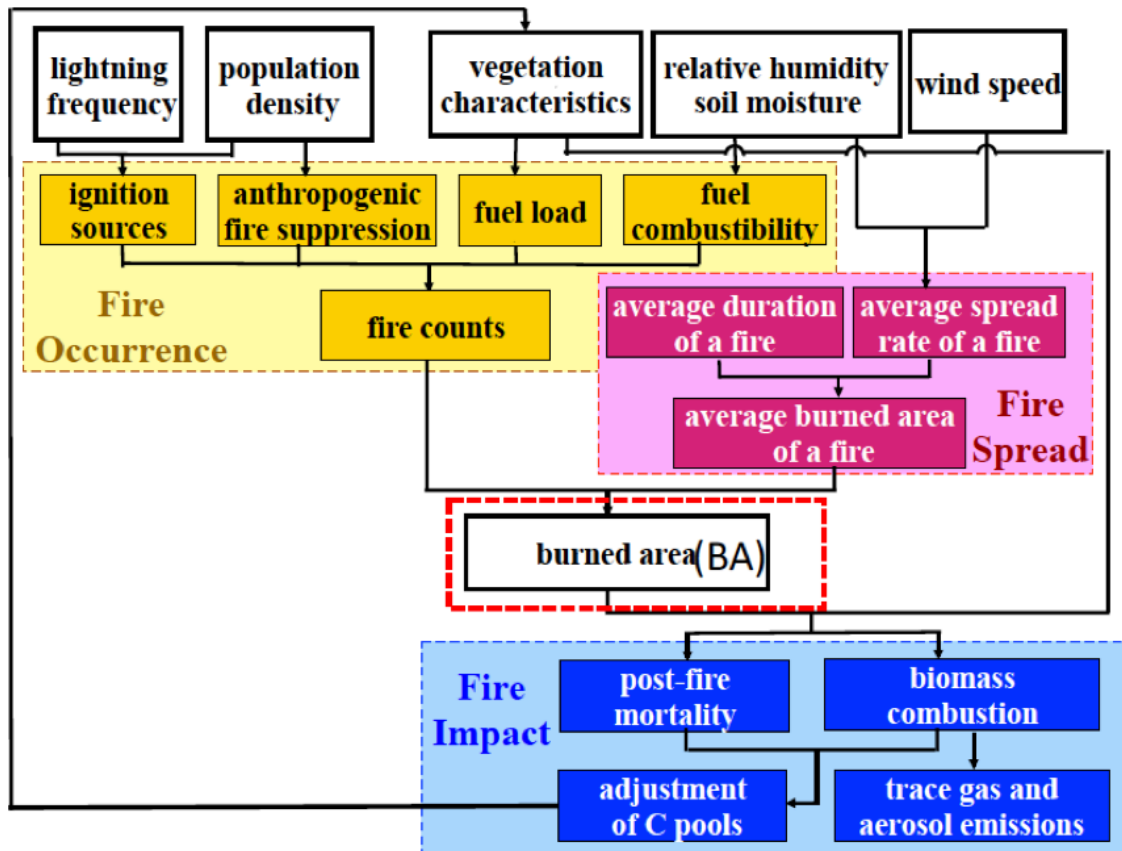
Andela 2017

Science Questions

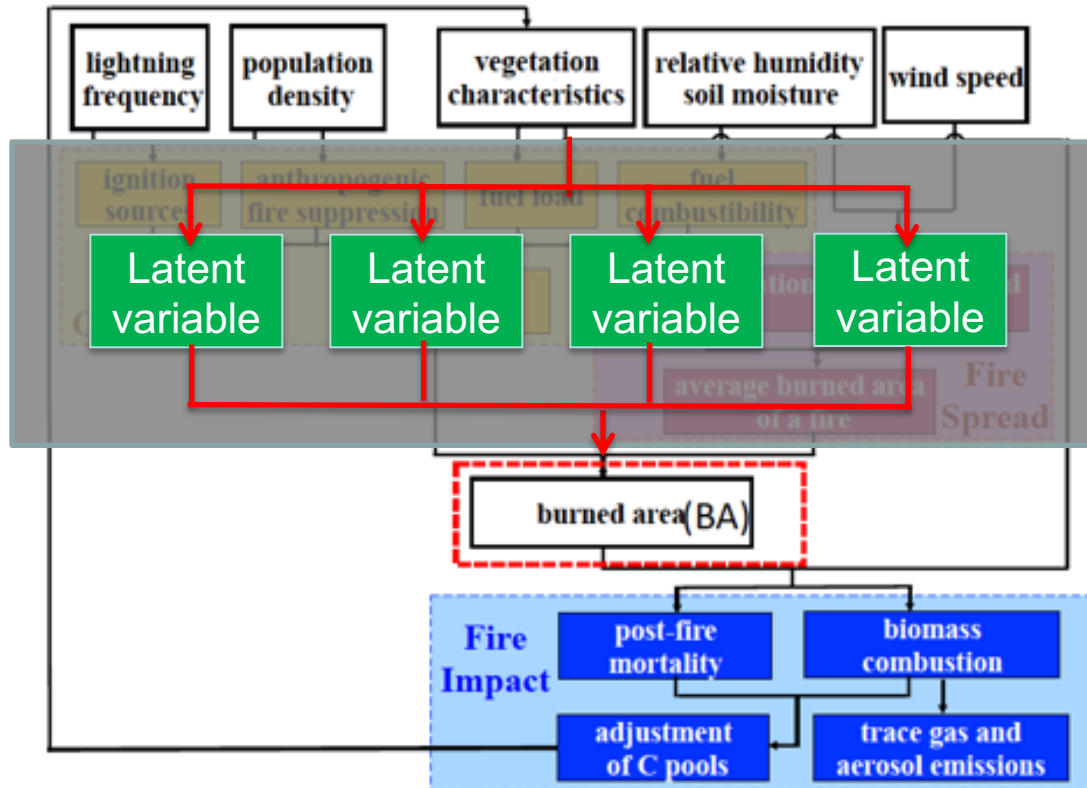
- How accurate is the current E3SM fire model in simulating burn area?
- How could machine learning help fire model parametrization?



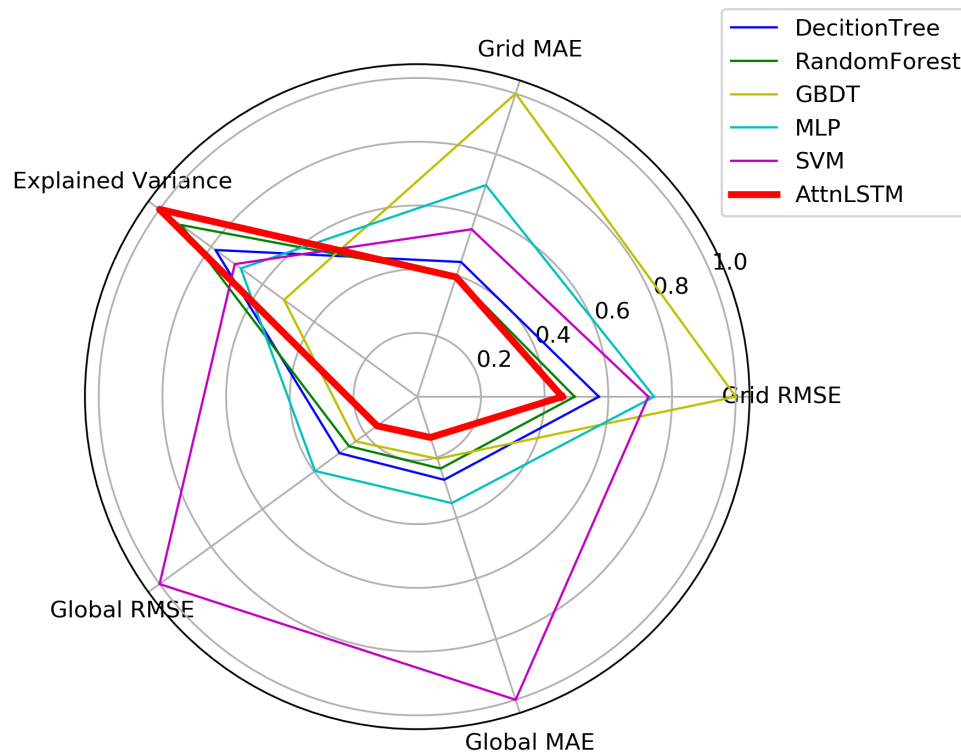
E3SM fire model



Development of a Machine Learning Fire Model in E3SM

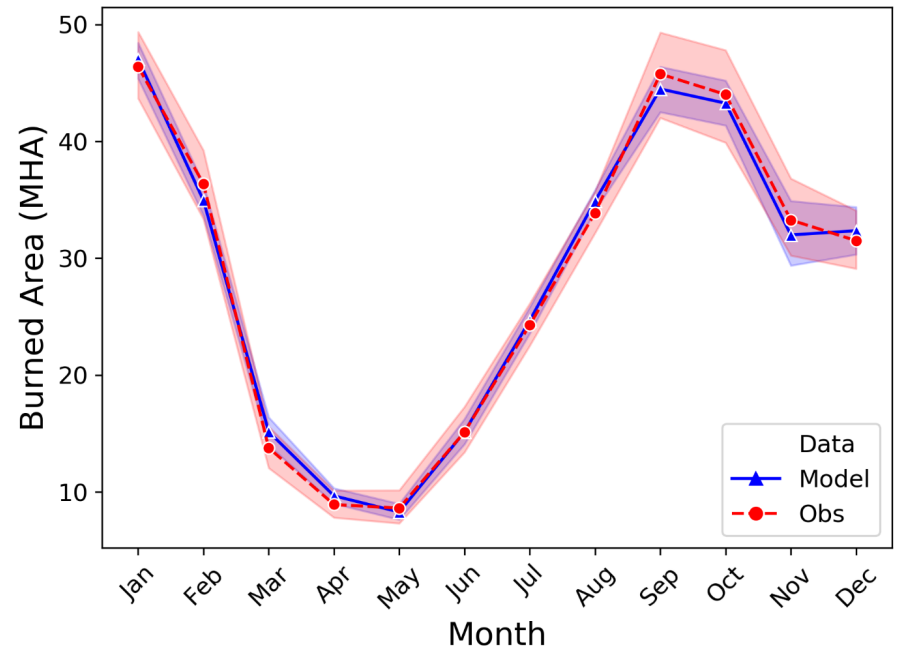
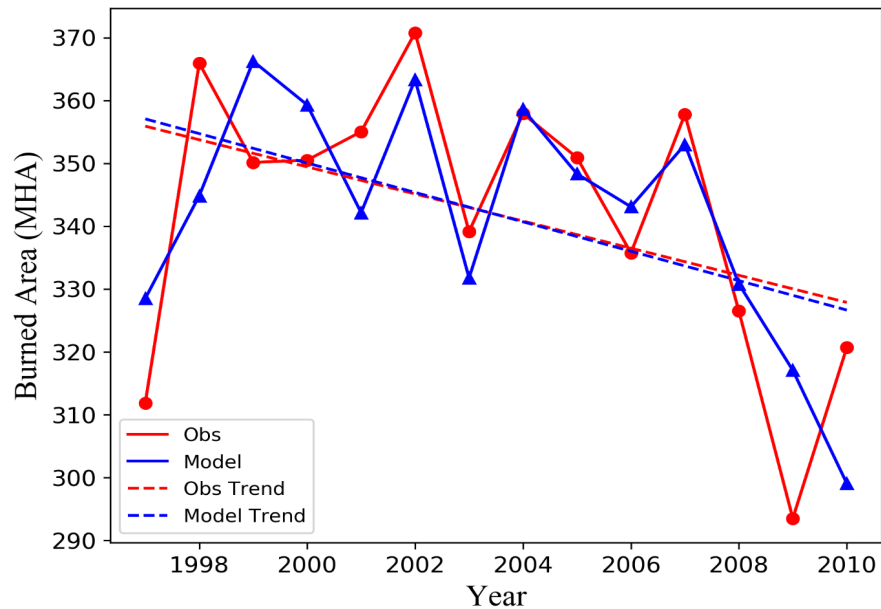


- BONA Boreal North America
- TENA Temperate North America
- CEAM Central America
- NHSA Northern Hemisphere South America
- SHSA Southern Hemisphere South America
- EURO Europe
- MIDE Middle East
- NHAF Northern Hemisphere Africa
- SHAF Southern Hemisphere Africa
- BOAS Boreal Asia
- CEAS Central Asia
- SEAS Southeast Asia
- ECAS Equatorial Asia
- AUST Australia and New Zealand



Model	Grid RMSE	Grid MAE	Global RMSE	Global MAE	Global Explained Variance
DecitionTree	0.064337	0.00897	27.282946	24.113867	0.618629
RandomForest	0.055752	0.008004	23.945963	20.859749	0.724087
GBDT	0.112835	0.020174	21.605206	18.018206	0.408553
MLP	0.083888	0.014080	35.889773	30.894498	0.541029
SVM	0.081880	0.011141	90.508528	87.970343	0.55925
AttnLSTM	0.051353	0.007965	14.100684	11.831382	0.790124

Development of a Machine Learning Fire Model in E3SM



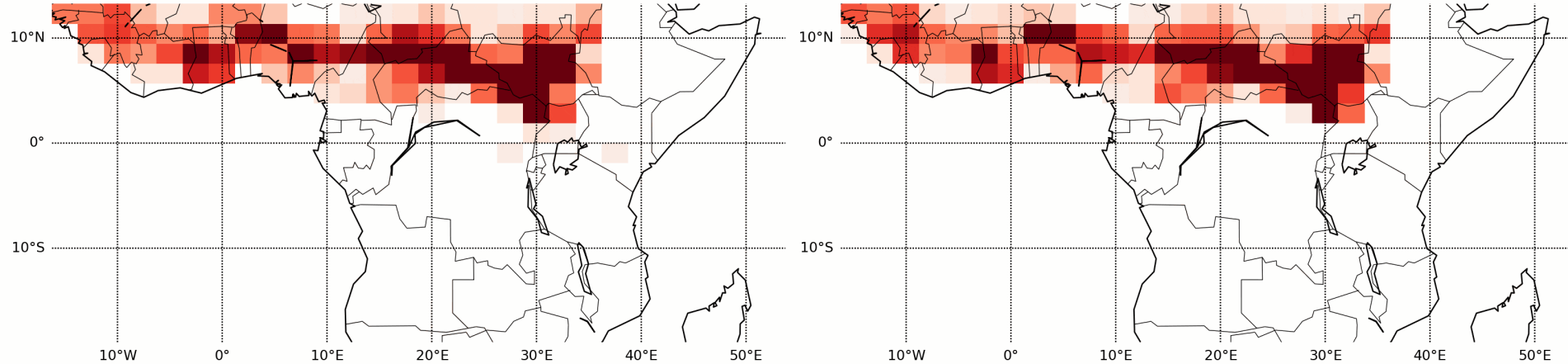
Critical fire zone



- | | | | |
|------|-----------------------------------|------|----------------------------|
| BONA | Boreal North America | NHAF | Northern Hemisphere Africa |
| TENA | Temperate North America | SHAF | Southern Hemisphere Africa |
| CEAM | Central America | BOAS | Boreal Asia |
| NHSA | Northern Hemisphere South America | CEAS | Central Asia |
| SHSA | Southern Hemisphere South America | SEAS | Southeast Asia |
| EURO | Europe | EQAS | Equatorial Asia |
| MIDE | Middle East | AUST | Australia and New Zealand |

Observation

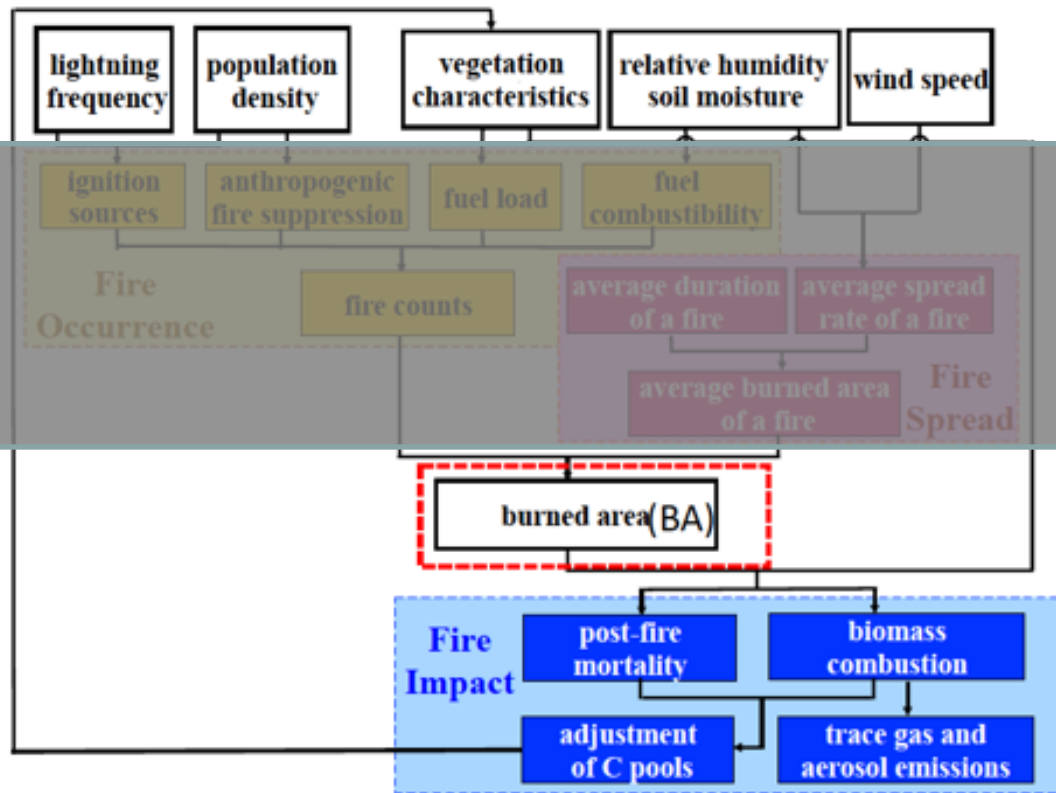
Model



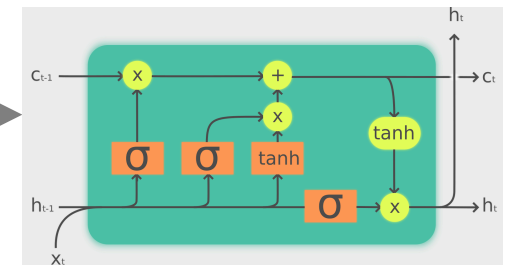
Burned Area (HA) of 1997-1



Development of a Machine Learning Fire Model in E3SM



Surrogate fire model using recurrent neural network



Accuracy improvement: **50-90%**

Parameterization time save: **>99%**

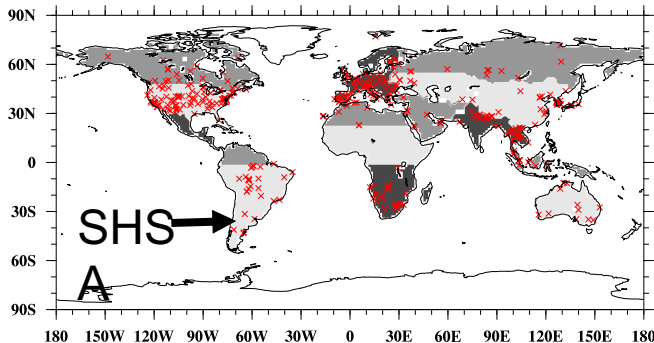
summary

- Machine Learning surrogate fire module produced high accuracy wildfire burned area
- Parameterization time could be reduced from ~weeks to ~minutes
- Powerful analytic capability with Attention mechanism

Simulation experiments

Experiment	Sources of carbonaceous aerosol and sulfate
No fire	Non-fire sources
Org. fire	Non-fire sources + fire emission from the original GFED4s data
Adj. fire	Non-fire sources + fire emission from the optimized GFED4s data

Optimized fire emission



$$AOD_{AERONET} = \beta AOD_{nofire}$$

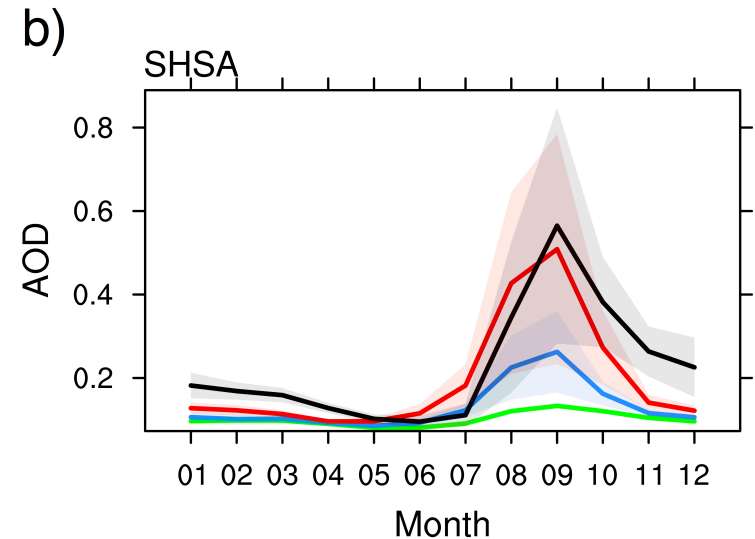
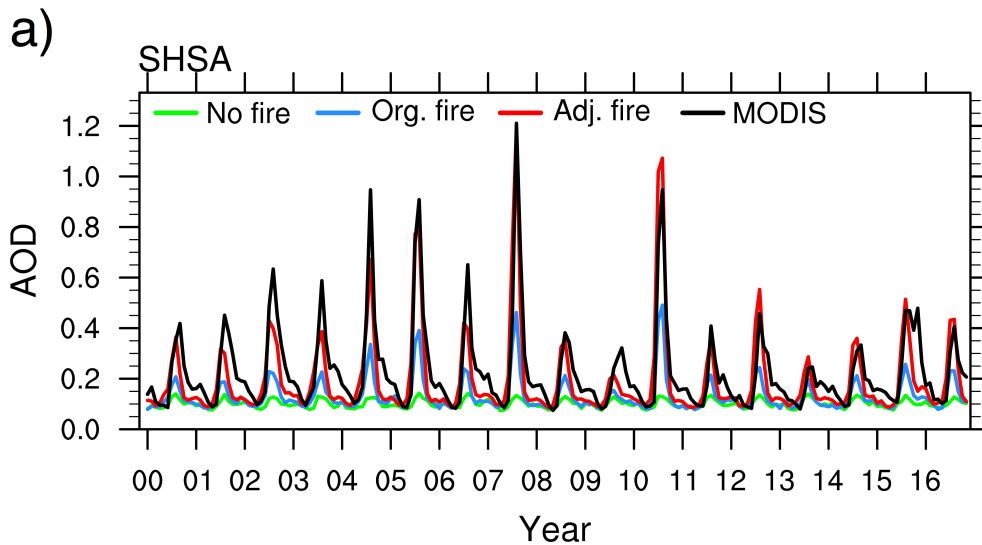
$$AOD_{AERONET} = \beta AOD_{nofire}$$

$$+ \alpha AOD_{fire}$$

Region	Fire emission scalar (α)
SHSA	2.79

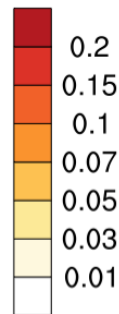
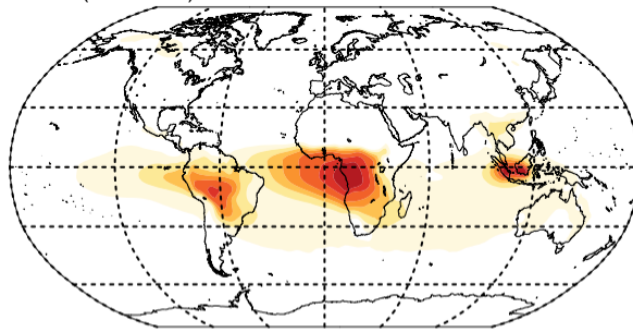
Li Xu et al.

The modeled aerosol optical depth from the optimized fire emission simulation has better agreement with the MODIS AOD

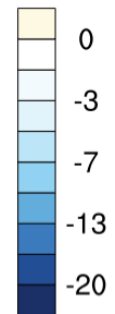
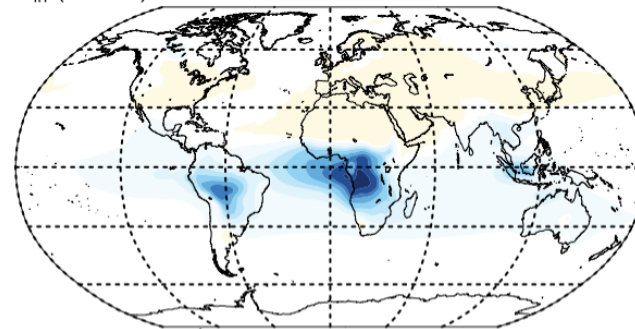


Fire aerosols significantly impact aerosol optical depth, induce strong cooling at surface and cause changes in surface temperature and precipitation, particularly at tropics

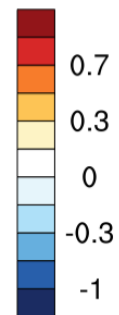
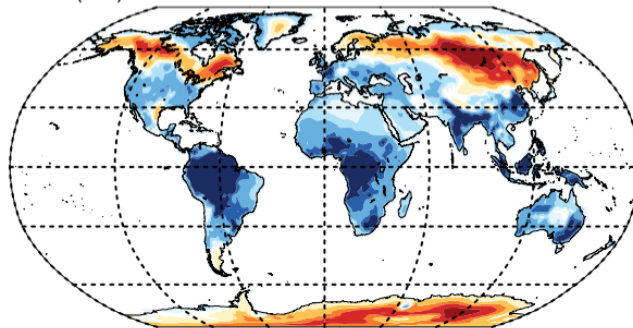
AOD (unitless)



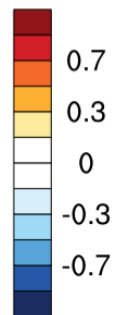
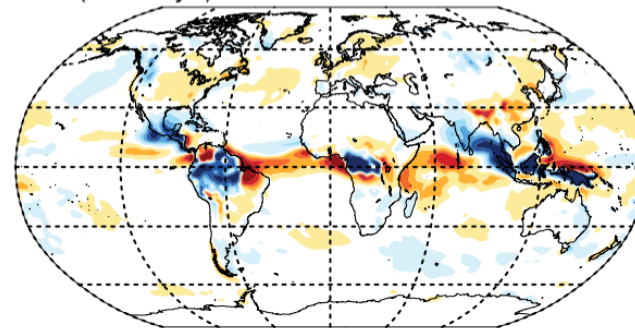
S_{in} ($W m^{-2}$)



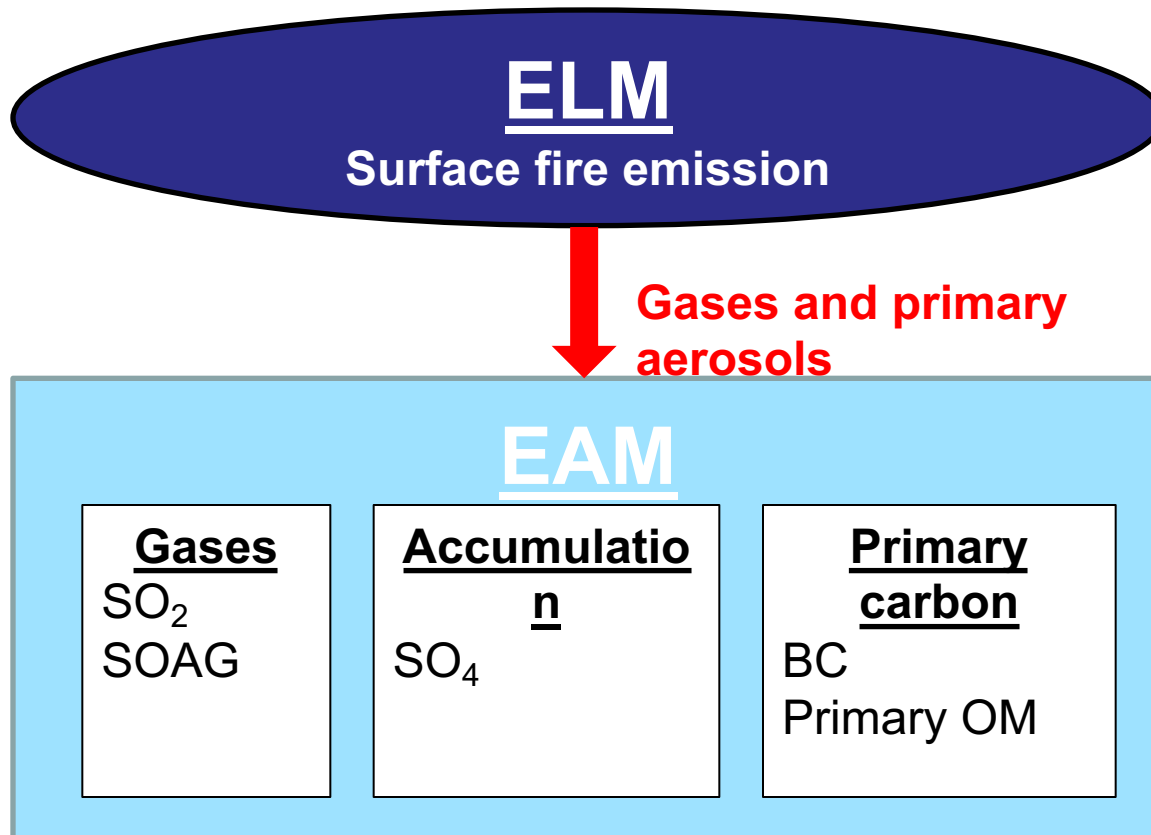
TAS ($^{\circ}C$)



PPT ($mm day^{-1}$)



Coupled fire emission module in E3SM

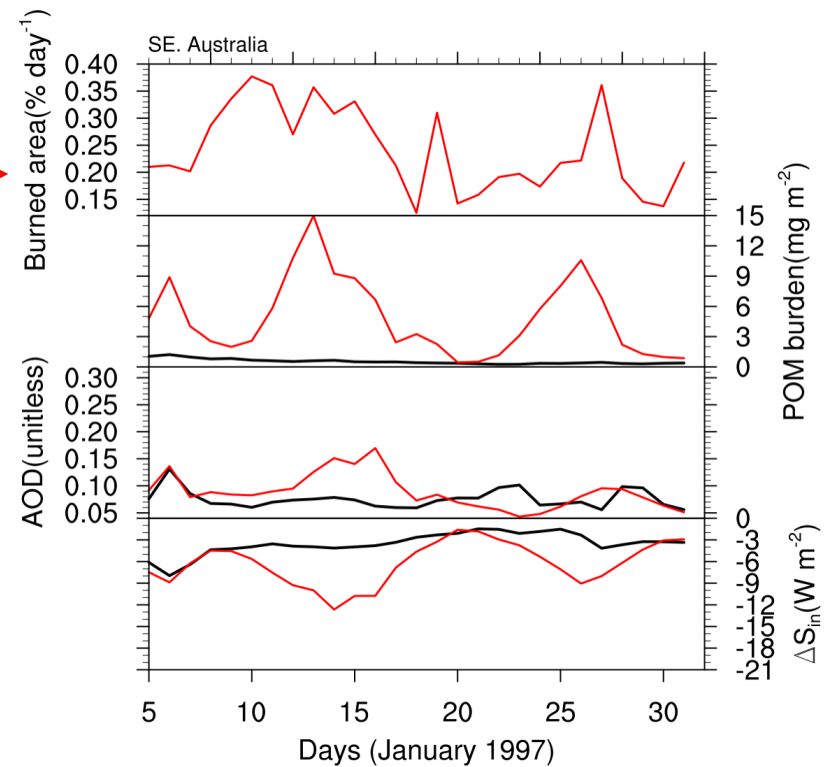
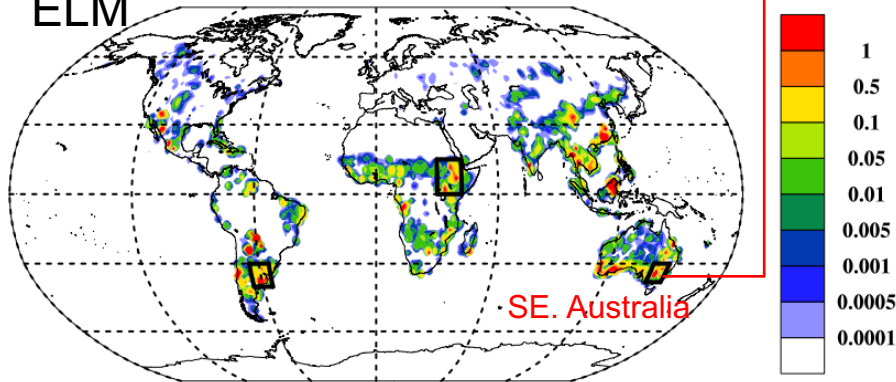


- PFT-dependent emission factor for each species
- Consideration of peat fire emission factor in the equatorial Asia
- Choice of surface or vertical fire emission in EAM

The coupled fire emission simulation

- instantaneously emits the fire-associated carbonaceous aerosols into the atmosphere
- produce a day-to-day variability of aerosol optical depth and aerosol radiative effects

POM fire emission ($\text{g m}^{-2} \text{ month}^{-1}$) from ELM



summary

- Adjusted fire emissions better represent observed AOD during fire peak season in tropical fire regions.
- Fire aerosols induce the strong surface cooling through both scattering and absorption of sunlight.
- Fire-associated aerosols species are instantaneously emitted into the atmosphere.

Thanks!

Model Settings

Model	Settings
Decision Tree	<p>Minimum leaf sample: [3,6,9] Maximum depth: 150</p>
Random Forest	<p>Minimum leaf sample: [3,6,9] Number of trees: [20,30,40]</p>
Gradient Boosting Decision Tree (GBDT)	<p>Learning rate: 0.01 Maximum depth: [3,4,5] Number of trees: 100</p>
MLP	<p>Learning rate: 0.001 Batch size: 32 Two hidden layers with 10 and 5 neuro units Optimizer: SGD</p>
SVM	<p>Maximum iteration: 10,000 Kernel: ['rbf', 'linear']</p>
AttnLSTM	<p>Learning rate: 0.001 Batch size: 32 Hidden dimension: 16 Sequence length: 12 Optimizer: SGD</p>