

A Multiscale Modelling Framework for E3SM

Walter Hannah¹

Dave Bader¹, Jungmin Lee¹, Matthew Norman², Sarat Sreepathi²,
Ruby Leung³, Kyle Pressel³, Chris Jones³, Guangxing Lin³, Mikhail Ovchinnikov³,
Mark Taylor⁴, Benjamin Hillman⁴, Andrew Bradley⁴, Chris Eldred⁴,
Xingqiu Yuan⁵, Nick Romero⁵, Mike Pritchard⁶

¹ Lawrence Livermore National Laboratory

² Oak Ridge National Laboratory

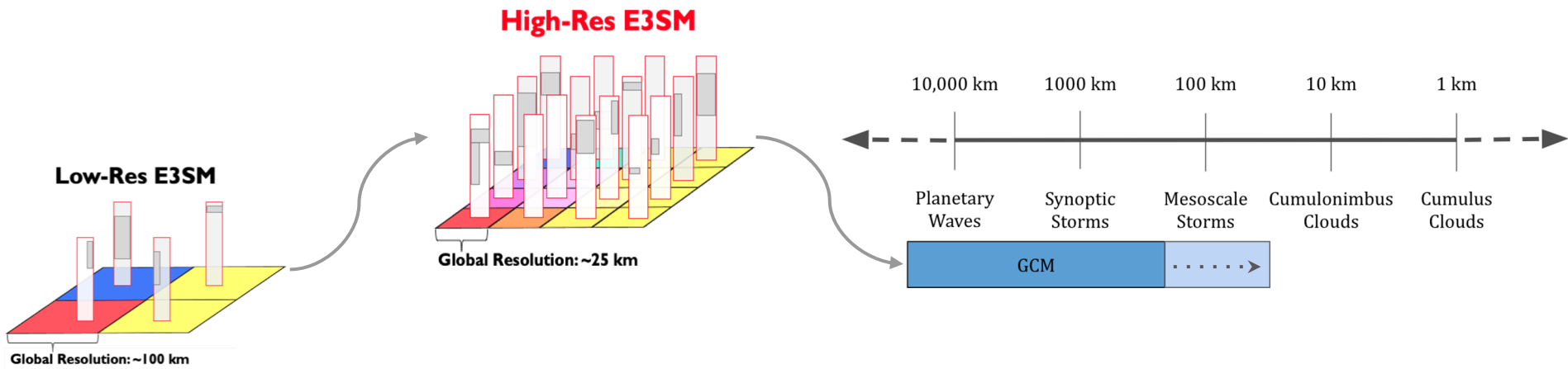
³ Pacific Northwest National Laboratory

⁴ Sandia National Laboratory

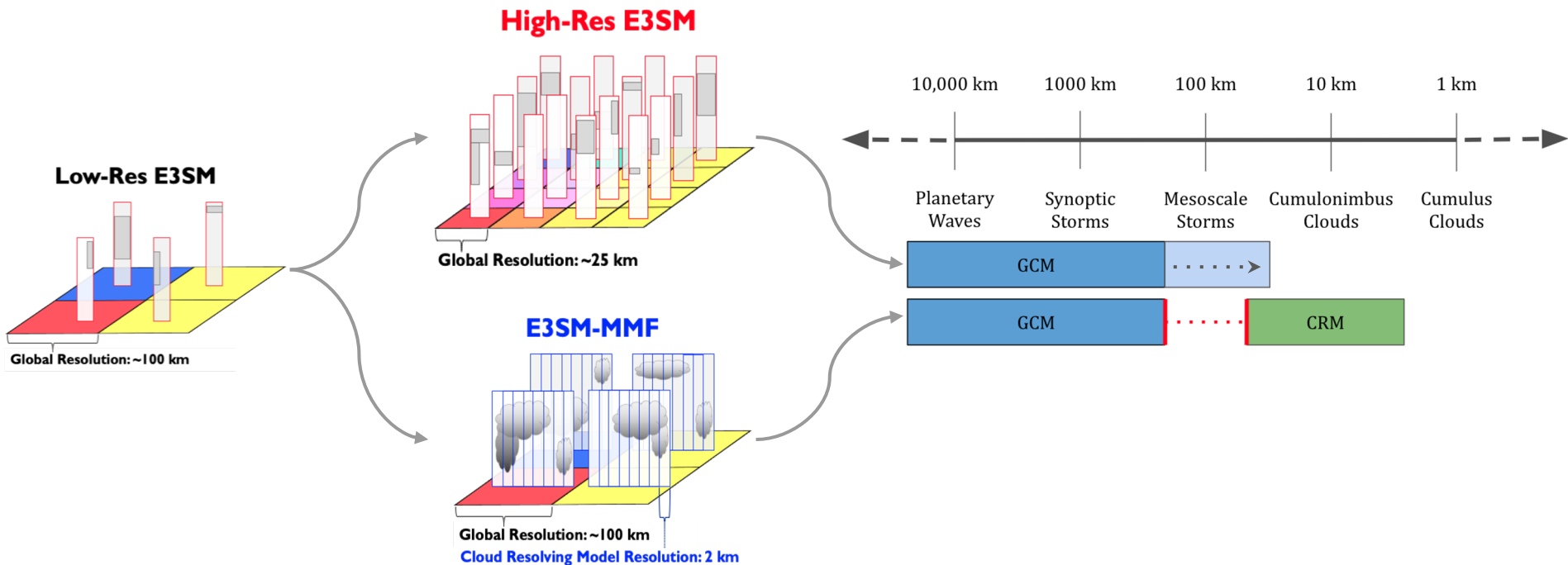
⁵ Argonne National Laboratory

⁶ UC Irvine

Enhancing the Resolved Scales



Enhancing the Resolved Scales



MMF Pros and Cons

Promising

- Explicit representation of clouds and cloud-radiative feedbacks
- Explicit (3D) or semi-explicit (2D) moment feedback (i.e. CMT)
- Semi-explicit cloud-aerosol feedbacks
- MMFs have a history of improving convectively coupled phenomena (ex. MJO)

Mixed

- The scale gap provides “computational leverage” that can be exploited for performance
- Precipitation and turbulence statistics are sensitive to CRM domain size and grid

Problematic

- Higher cost makes development/testing difficult, especially climate reproducibility
- The scale gap stops small scale variance from being transported on the global grid

The Exascale Computing Project



We are focused on making E3SM-MMF viable
for climate simulations by making it faster

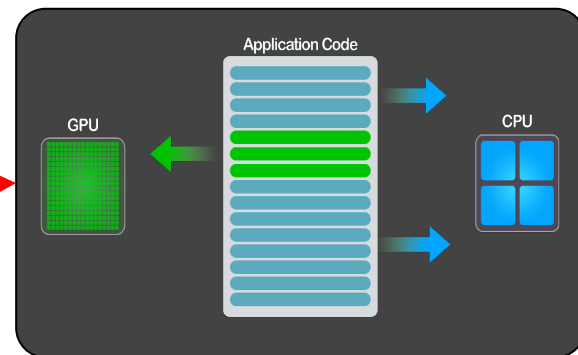
The Exascale Computing Project



We are focused on making E3SM-MMF viable for climate simulations by making it *faster*

Hardware Acceleration

- The CRMs are independent so they can be offloaded to a GPU
- Radiation can be similarly accelerated



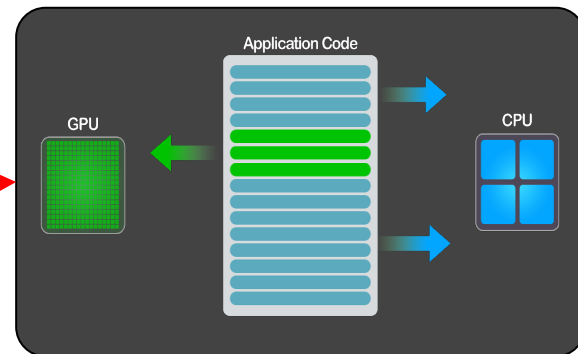
The Exascale Computing Project



We are focused on making E3SM-MMF viable for climate simulations by making it *faster*

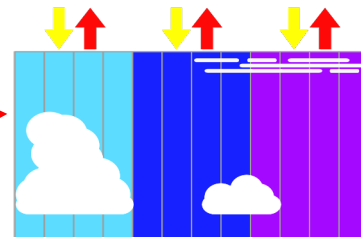
Hardware Acceleration

- The CRMs are independent so they can be offloaded to a GPU
- Radiation can be similarly accelerated



Algorithmic Acceleration

- The scale separation of the models can be exploited to reduce the number of CRM time steps
- Radiation is done on groups of columns to reduce the workload, and aerosol optics are done once per physics column



Performance Portability Challenges


OpenACC vs C++ vs OpenMP

The ability to run on future hardware is crucial for the success of the MMF, and multiple versions of the CRM may be needed to maintain support across different architectures

Performance Portability Challenges

OpenACC vs C++ vs OpenMP

The ability to run on future hardware is crucial for the success of the MMF, and multiple versions of the CRM may be needed to maintain support across different architectures

-  OpenACC was used initially to run the Fortran CRM on GPUs, but this was problematic

Performance Portability Challenges

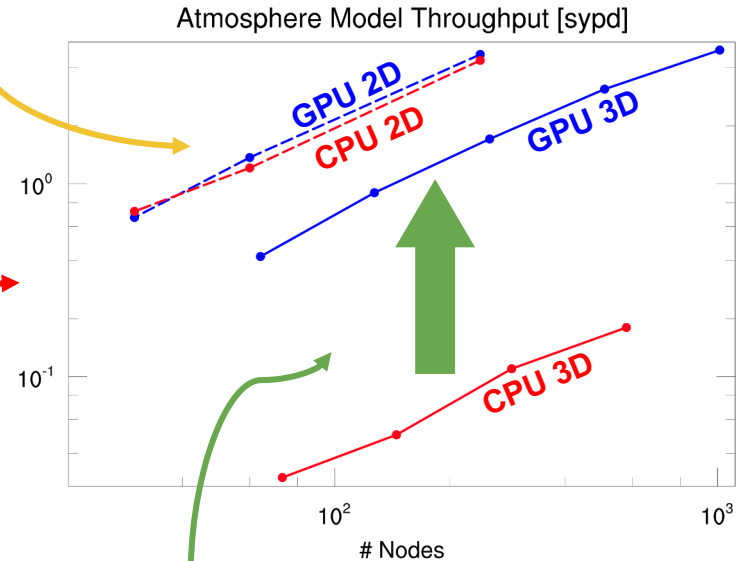
OpenACC vs C++ vs OpenMP

The ability to run on future hardware is crucial for the success of the MMF, and multiple versions of the CRM may be needed to maintain support across different architectures

❌ OpenACC was used initially to run the Fortran CRM on GPUs, but this was problematic

✅ The CRM was rewritten in C++ and has good performance on Summit GPUs

GPU speed-up of 2D CRM (32x1)
masked by radiation



~10-15x GPU speed-up of 3D CRM (32x32)

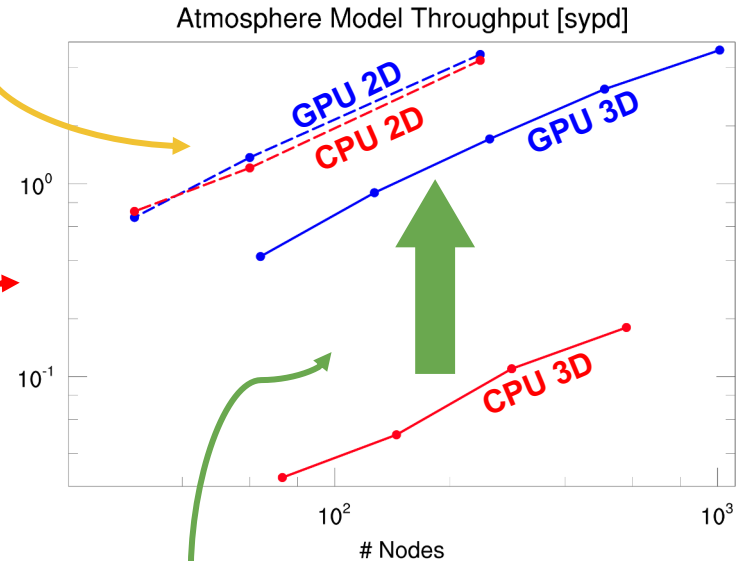
Performance Portability Challenges

OpenACC vs C++ vs OpenMP

The ability to run on future hardware is crucial for the success of the MMF, and multiple versions of the CRM may be needed to maintain support across different architectures

- ❌ OpenACC was used initially to run the Fortran CRM on GPUs, but this was problematic
- ✅ The CRM was rewritten in C++ and has good performance on Summit GPUs
- ❓ An OpenMP version of the Fortran CRM is also being pursued

GPU speed-up of 2D CRM (32x1)
masked by radiation



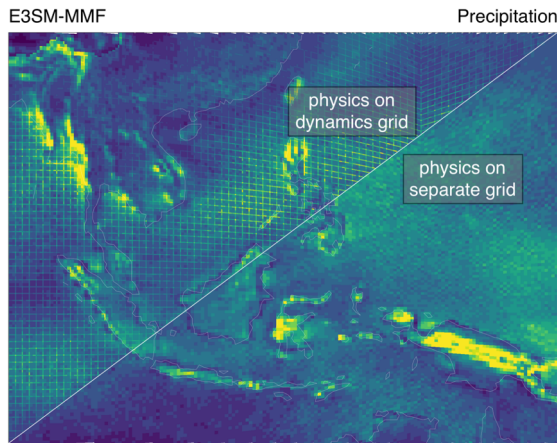
~10-15x GPU speed-up of 3D CRM (32x32)

Early Problems (and Solutions)

The code was ported from SP-CAM and we immediately ran into problems using the SE dycor and finer vertical grid of E3SM

- Instability in the CRM turbulence scheme → Resolved with turbulent CFL
- Enhanced “fog” bias due to thinner levels → Resolved with stronger mixing
- Grid imprinting from spectral GLL grid → Resolved with new FV physics grid

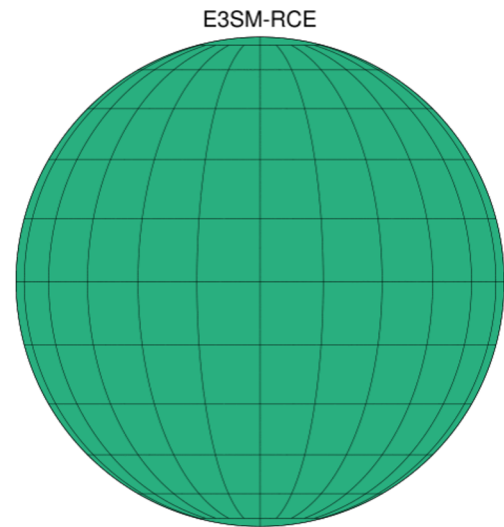
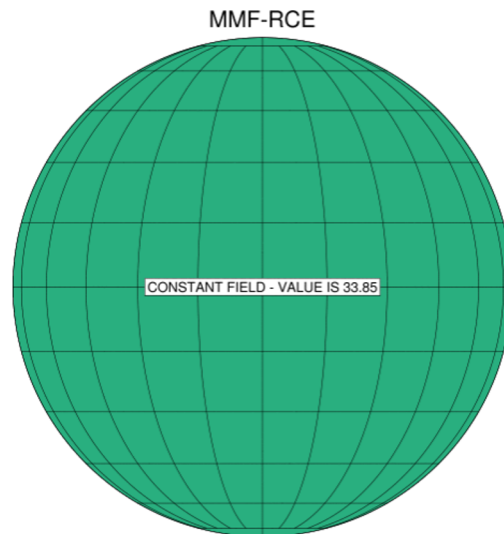
The grid imprinting problem motivated the new FV physics grid, which resolves the imprinting and improves performance



Feedbacks to E3SM

The unique problems we encountered with the MMF have led us to contribute to E3SM development:

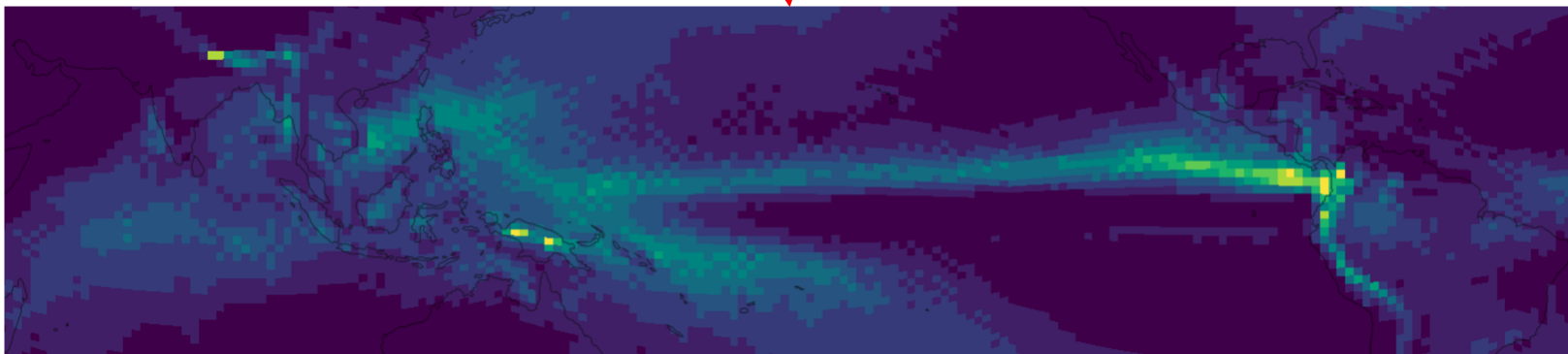
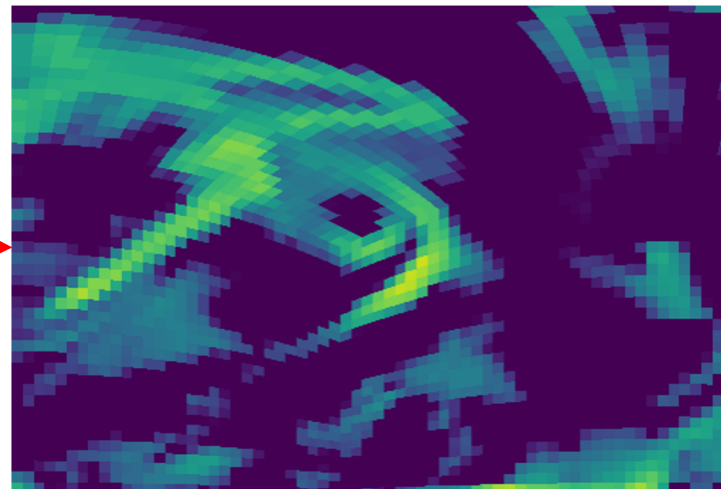
- Aquaplanet and RCE compsets
- C++ and GPU porting of RRTMGP
- Finite volume physics grid
(i.e. physgrid)
- New tool for hindcast initial conditions
(i.e. HICCUP)
- YAKL for performance portability
(temporary alternative to Kokkos)



The Variance Trapping Problem

After we started running on the physgrid we started noticing oddly “*stuck*” pixels in animations on the native grid...

We also noticed some “*checkerboard*” noise was present in the precipitation climatology



The Variance Trapping Problem

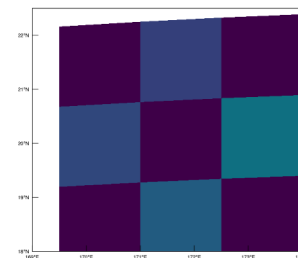
The MMF coupling only considers the CRM domain mean, so smaller scales cannot be advected on the global grid

Convective circulations can become “trapped” at the largest scales locking the CRM in an **active state**

Large-scale dynamics causes downstream CRMs to become locked in a relatively **quiescent state**

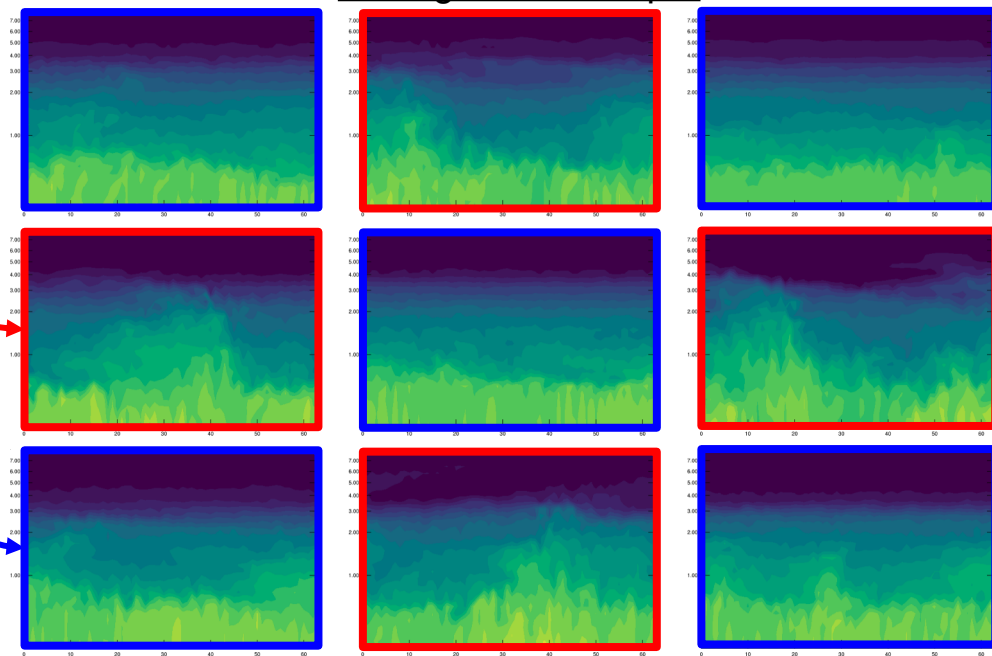
Note that the issue is relatively “small” when compared to typical biases

GCM grid liquid water path



averaged over several days

CRM grid water vapor



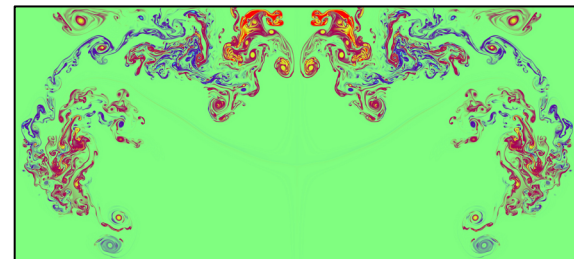
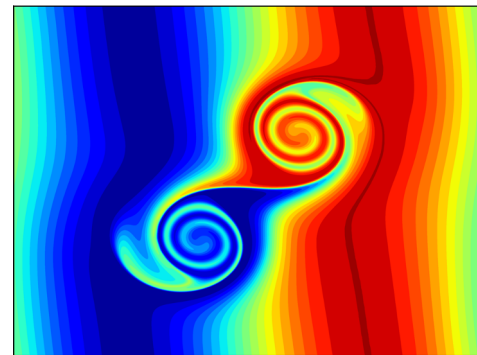
Future Plans - SAM, meet PAM



The current CRM code has diverged from SAM (now with more C++!), but we are also building a new CRM from scratch!

The Portable Atmospheric Model (PAM) will be written in C++

- Optimized for MMF performance
- New physics from SCREAM (P3/SHOC)
- New dynamics
 - High-order finite volume using WENO methods
 - ADER time stepping for long time steps
 - Anelastic (potentially with Compressible option)
- Standalone capability for testing, development, and science



Future Plans for Science

We have reproduced many previous MMF results and current efforts are focused on enhancing the MMF for climate experiments:

Future Plans for Science

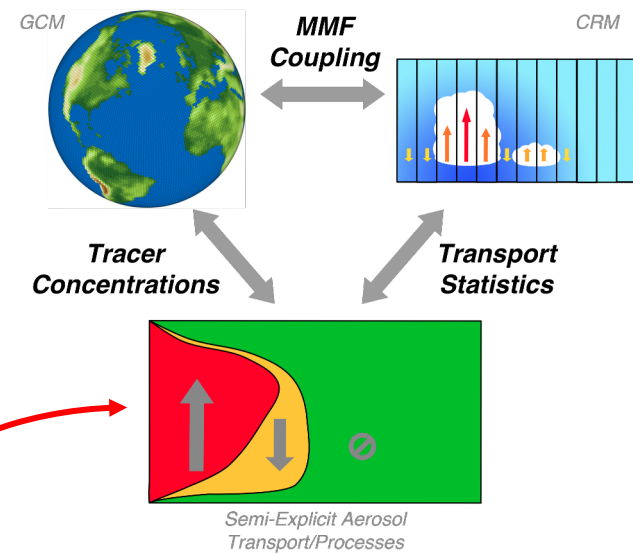
We have reproduced many previous MMF results and current efforts are focused on enhancing the MMF for climate experiments:

- Add P3+SHOC to CRM for comparison w/ SCREAM

Future Plans for Science

We have reproduced many previous MMF results and current efforts are focused on enhancing the MMF for climate experiments:

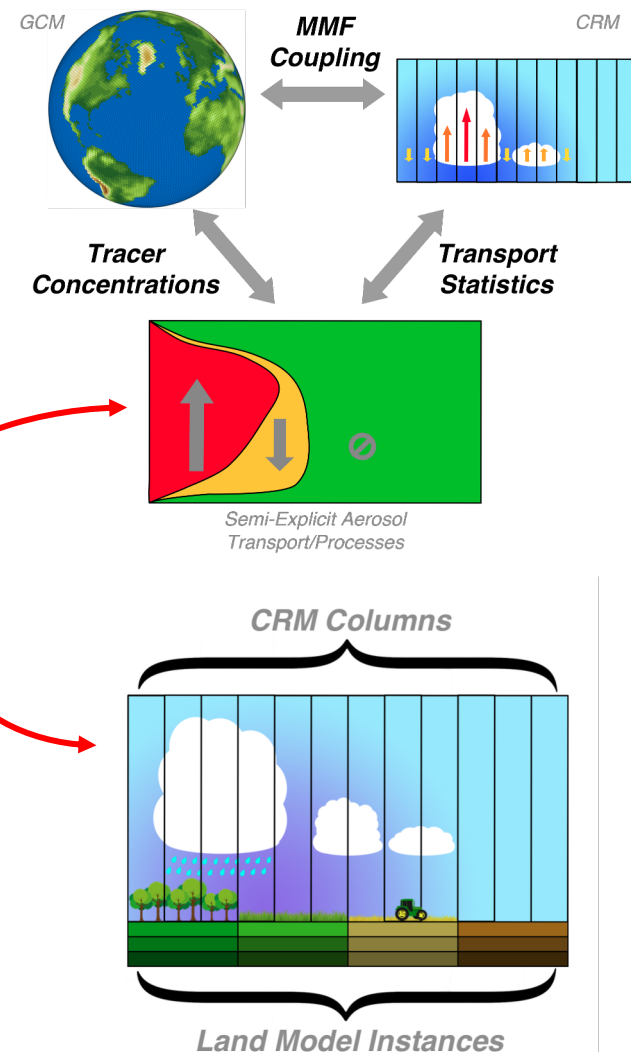
- Add P3+SHOC to CRM for comparison w/ SCREAM
- Semi-explicit cloud-aerosol interaction (ECPP)



Future Plans for Science

We have reproduced many previous MMF results and current efforts are focused on enhancing the MMF for climate experiments:

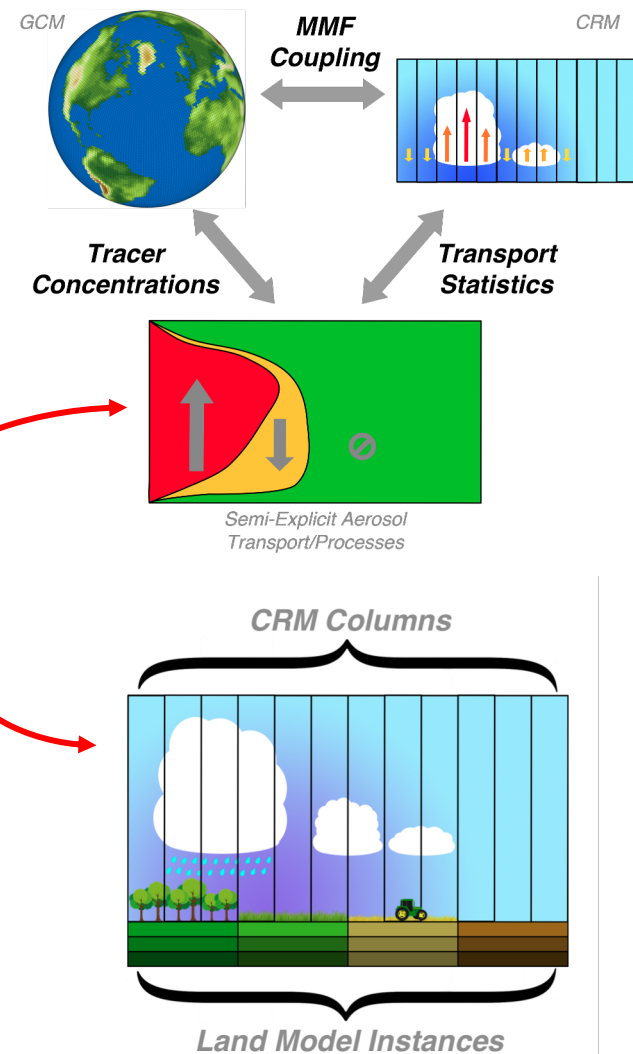
- Add P3+SHOC to CRM for comparison w/ SCREAM
- Semi-explicit cloud-aerosol interaction (ECPP)
- Direct Coupling between the CRM and land (MAML) with flexibility for land heterogeneity across CRM



Future Plans for Science

We have reproduced many previous MMF results and current efforts are focused on enhancing the MMF for climate experiments:

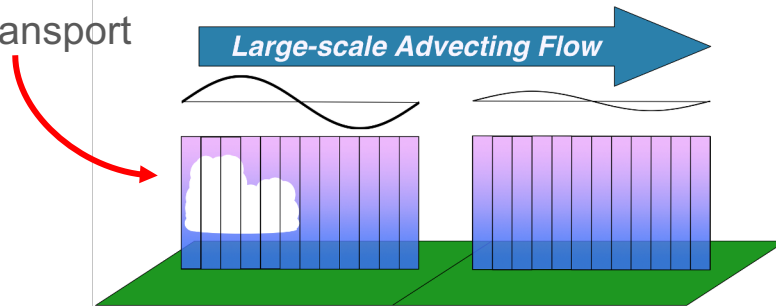
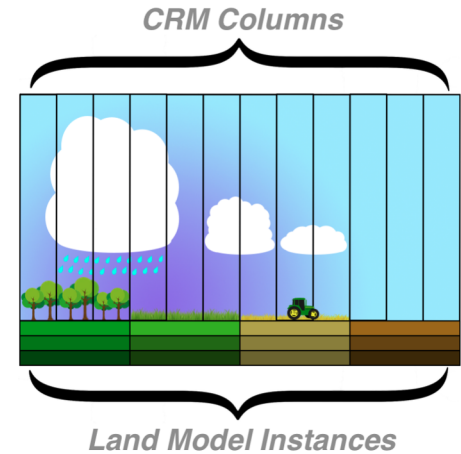
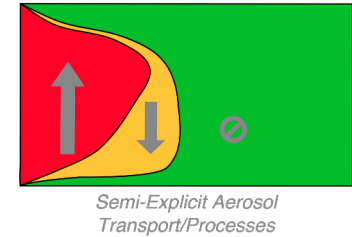
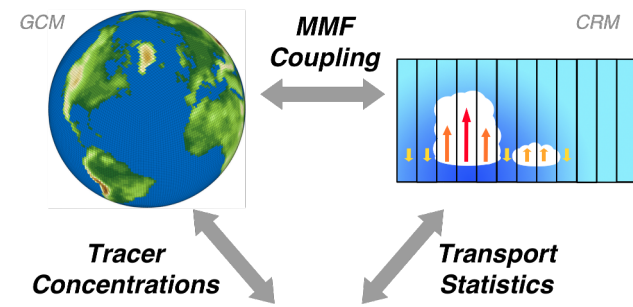
- Add P3+SHOC to CRM for comparison w/ SCREAM
- Semi-explicit cloud-aerosol interaction (ECPP)
- Direct Coupling between the CRM and land (MAML) with flexibility for land heterogeneity across CRM
- Tuning the CRM for coupled experiments



Future Plans for Science

We have reproduced many previous MMF results and current efforts are focused on enhancing the MMF for climate experiments:

- Add P3+SHOC to CRM for comparison w/ SCREAM
- Semi-explicit cloud-aerosol interaction (ECPP)
- Direct Coupling between the CRM and land (MAML) with flexibility for land heterogeneity across CRM
- Tuning the CRM for coupled experiments
- CRM variance transport



In Summary...

E3SM-MMF will be viable for climate experiments in v4

- The MMF approach is well suited for utilizing GPUs
- Performance will be portable across current and upcoming DOE machines
- Throughput is on par with traditionally parameterized models, which allows for multi-decadal experiments
- Explicit convection can overcome long-standing parameterization issues